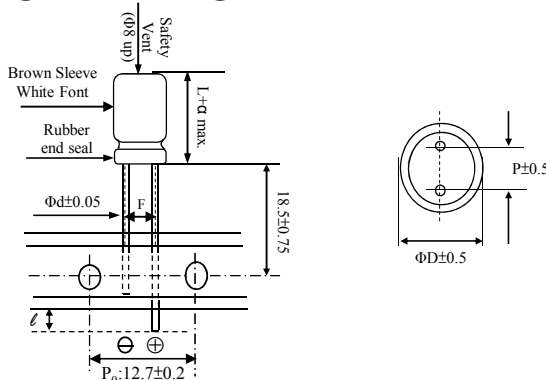


FOR APPROVAL

DIMENSIONS(mm)

ΦD	10
L	13
α	1.0
P	5.0
F ^{+0.8} _{-0.2}	5.0
ℓ	1.0
Φd	0.6



Customer: Melchioni	Electrolytic Capacitors SD Series								Su'scon Code			
Electric Characteristics:												
Melchioni P/N	Su'scon P/N	Cap. (uF)	Cap. Tol. (%)	Rate Volt. (V-DC)	Surge Volt. (V-DC)	Oper. Temp. (°C)	Nominal Case Size D*L(mm)	Leakage Current Max (uA)	D.F. MAX (%)	R.C 100K Hz (mA rms)	IMP 100KHz at 25°C (Ω)Max	Load Life (hours)
	SD035M221G13PE89P50R	220	±20	35	44	105	10*13	77	12	720	0.100	2000

REMARKS:

- Leakage Current Test:** 6.3V ~100V at 20°C for 2 minutes; 160V ~450V at 20°C for 5 minutes ;
- Operating temperature:** 6.3V~400V -40°C~ +105°C ;420~450V -25°C~ +105°C ;
- Dissipation Factor Test:** at 20°C, 120 Hz.
- Capacitance Test:** at 20°C, 120 Hz.
- Ripple Current Test:** at 105°C, 100K Hz ;
- Load Life:** 2000 hours,subjected to DC voltage with the rated ripple current is applied at 105°C.

Capacitance Change: Within±20% of initial value;
tanδ: 200% or less of initial specified value;
 According to the specified value which stated in the catalogue to do the life testing;

Leakage Current: Initial specified value or less.

- Shelf Life:** The following specifications shall be satisfied when the capacitors exposing them for 1000 hours 105°C without voltage applide. Before the measurement, the capacitor shall be preconditioned by applying voltage according to them 4.1 of JIS C5101-4.

Capacitance Change : Within±20% of initial value;
tanδ: 200% or less of initial specified value;
Leakage Current : Initial specified value or less.

- when have characteristic requested:** Load life & shelf life test and etc. , judgment standard reference to our catalogue.

●SPECIFICATION

Voltage Range 工作電壓範圍	6.3V~100V	160V~400V	450V									
Leakage Current 洩漏電流	WV ≤ 100V I ≤ 0.01CV(After 2 minutes application of DC working voltage,at 20°C)											
	WV > 100V I ≤ 0.03CV+20 (uA)(After 5 minutes application of DC working voltage,at 20°C)											
Dissipation Factor 散逸因素 (損失角) (tan δ)	Measurement Frequency:120Hz. Temperature:20°C											
	Rate Voltage(V)	6.3	10	16	25	35	50	63	100	160~250	400~450	
	tanδ (MAX)	0.22	0.19	0.16	0.14	0.12	0.10	0.08	0.07	0.20	0.24	
	When nominal capacitance over 1000μF, tanδ shall be added 0.02 to the listed value with increase of every 1000μF.											
Standards 參照標準	JIS C-5101-4(IEC 60384)											

●RIPPLE CURRENT COEFFICIENTS

Frequency coefficient of allowable ripple current						
Rated Voltage(V)	Capacitance(uF)	Frequency(Hz)				
		50	120	1k	10k	100k
6.3~100	0.47~100	0.45	0.55	0.75	0.90	1.00
	220~1000	0.60	0.70	0.85	0.95	1.00
	1500~15000	0.70	0.80	0.95	0.98	1.00
160~450	2.2~330	0.55	0.65	0.80	0.90	1.00

The endurance of capacitors is reduced with internal heating produced by ripple current at the rate of halving the lifetime with every 5°C rise. When long life performance is required in actual use, the rms ripple current has to be reduced.

Production date:2023.04.20