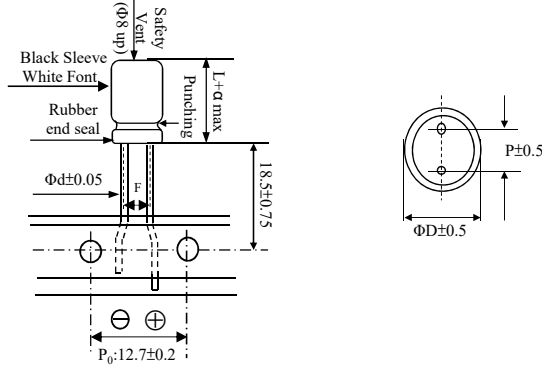


FOR APPROVAL

DIMENSIONS(mm)

| | |
|-----------------------------------|-----|
| ΦD | 5 |
| L | 11 |
| α | 1.0 |
| P | 2.0 |
| F ^{+0.8} _{-0.2} | 2.0 |
| Φd | 0.5 |



| | | |
|------------------|--------------------------------|----------------|
| Customer: | Electrolytic Capacitors | Su'scon |
| Melchioni | SK Series | Code |

| | | | | | | | | | | | |
|----------------------------------|----------------------|-----------|---------------|-------------------|--------------------|------------------|---------------------------|--------------------------|--------------|---------------------|-------------------|
| Electric Characteristics: | | | | | | | | | | | |
| Melchioni | Su'scon | Cap. (uF) | Cap. Tol. (%) | Rate Volt. (V-DC) | Surge Volt. (V-DC) | Oper. Temp. (°C) | Nominal Case Size D*L(mm) | Leakage Current Max (uA) | D.F. MAX (%) | R.C 120 Hz (mA rms) | Load Life (hours) |
| P/N | P/N | | | | | | D*L(mm) | | | | |
| | SK035M470D11PE89P20R | 47 | ±20 | 35 | 44 | 105 | 5*11 | 16 | 12 | 105 | 2000 |

REMARKS:

- Leakage Current Test:** 6.3V~100V at 20°C for 2 minutes; 160V~500V at 20°C for 3 minutes;
- Operating temperature:** 6.3V~400V -40°C~ +105°C ;420V~500V -25°C~ +105°C ;
- Dissipation Factor Test:** at 20°C, 120 Hz.
- Capacitance Test:** at 20°C, 120 Hz.
- Ripple Current Test:** at 105°C, 120 Hz ;
- Load Life:** 2000hours,subjected to DC voltage with the rated ripple current is applied at 105°C.

Capacitance Change: Within±20% of initial value;

tanδ: 200% or less of initial specified value;

Leakage Current: Initial specified value or less;

7. Shelf Life: According to the specified value which stated in the catalogue to do the life testing; exposing them for 1000 hours 105°C without voltage applide. Before the measurement, the capacitor shall be preconditioned by applying voltage according to them 4.1 of JIS C5101-4.

Capacitance Change : Within±20% of initial value;

tanδ: 200% or less of initial specified value;

Leakage Current: Initial specified value or less.

8. when have characteristic requested : Load life & shelf life test and etc. , judgment standard reference to our catalogue.

●SPECIFICATION

| | | | | | | | | | | | | |
|----------------------------------|--|---|------|------|------|------|------|------|------|------|---------|---------|
| Voltage Range 工作電壓範圍 | 6.3V~100V | 160V~500V | | | | | | | | | | |
| Leakage Current 洩漏電流 | I ≤ 0.01CV or 3 (uA), Which is greater. (After 2 minutes application of working voltage) | I ≤ 0.03CV + 20(uA), (After 3 minutes application of working voltage) | | | | | | | | | | |
| Dissipation Factor 散逸因素 (損失角) | Measurement Frequency: 120Hz. Temperature: 20°C | | | | | | | | | | | |
| (tan δ) | Rate Voltage(V) | 6.3 | 10 | 16 | 25 | 35 | 50 | 63 | 80 | 100 | 160~250 | 350~500 |
| | tanδ (MAX) | 0.24 | 0.20 | 0.16 | 0.15 | 0.12 | 0.10 | 0.09 | 0.08 | 0.08 | 0.20 | 0.25 |
| | When nominal capacitance over 1000µF, tanδ shall be added 0.02 to the listed value with increase of every 1000µF . | | | | | | | | | | | |
| Standards 參照標準 | JIS C-5101-4(IEC 60384) | | | | | | | | | | | |

●RIPPLE CURRENT COEFFICIENTS

| | | | | | |
|---|-----------------|---------------|------|------|-------|
| Frequency coefficient of allowable ripple current | | | | | |
| Rated Voltage(V) | Capacitance(uF) | Frequency(Hz) | | | |
| | | 50 | 120 | 1K | ≥ 20k |
| ≤ 100 | <100 | 0.75 | 1.00 | 1.40 | 1.50 |
| | 100~470 | 0.75 | 1.00 | 1.20 | 1.30 |
| | >470 | 0.85 | 1.00 | 1.10 | 1.15 |
| ≥ 160 | 0.47~470 | 0.75 | 1.00 | 1.10 | 1.50 |

The endurance of capacitors is reduced with internal heating produced by ripple current at the rate of halving the lifetime with every 5°C rise. When long life performance is required in actual use, the rms ripple current has to be reduced.
 Production date: 2024.06.28