

# 2/3/4/5 Megapixel H.265 Motorized Pro Dome Network Camera



IP67 + IK10

Motorized Lens

MS-C2872-(R)F(I)PB/MS-C2972-(R)F(I)PB/  
MS-C3772-F(I)PB/MS-C4472-F(I)PB/  
MS-C5372-F(I)PB

DATASHEET

## KEY FEATURES

- ▶ **Smart Stream** (Bandwidth, storage and bit rate save with Smart Stream ON, eg. H.265+ save 70%~80% bandwidth of H.264.)
- ▶ **Smart IR II** (Combining the High Beam and Low Beam to adjust IR intensity to fit different lighting conditions.)
- ▶ **P-Iris** (Giving you a more clear scene with depth of view.)
- ▶ **Advanced Functions** (Boasting to support various advanced functions such as HLC, Defog, ROI.)
- ▶ **SIP** (Session Initiation Protocol. Providing audio/alarm/intercom and video streaming for mobile phones and video phones.)
- ▶ **128G** (Supporting ultra-large external microSD/SDHC/SDXC card storage up to 128G.)

### Video Content Analysis

Milesight VCA with 8 detection modes provides advanced, accurate smart video analysis for Milesight network cameras, enabling the comprehensive surveillance function and quicker response to different monitoring scenes.



### 0.001Lux Ultra Low-light

The starlight camera is able to deliver high detailed color images even in low light environment reaching 0.001Lux(Color) or 0Lux(B/W), and near infrared light environments without any supplementary lighting.

### 140dB Super WDR

Milesight's sensor-based WDR technology allows the camera to record greater scene details with true color reproduction even under the extreme back light and high contrast conditions. The ratio that the brightest light signal values divided by the darkest light signal values is up to 140dB.



### Clamshell Design

Aiming to reduce the installation troubles to the least, Milesight creatively introduces the clamshell design to the dome base. This revolutionary innovation enlarges the space to make cable connection a piece of cake, greatly saving efforts for installers.

# H.265 Motorized Pro Dome Network Camera

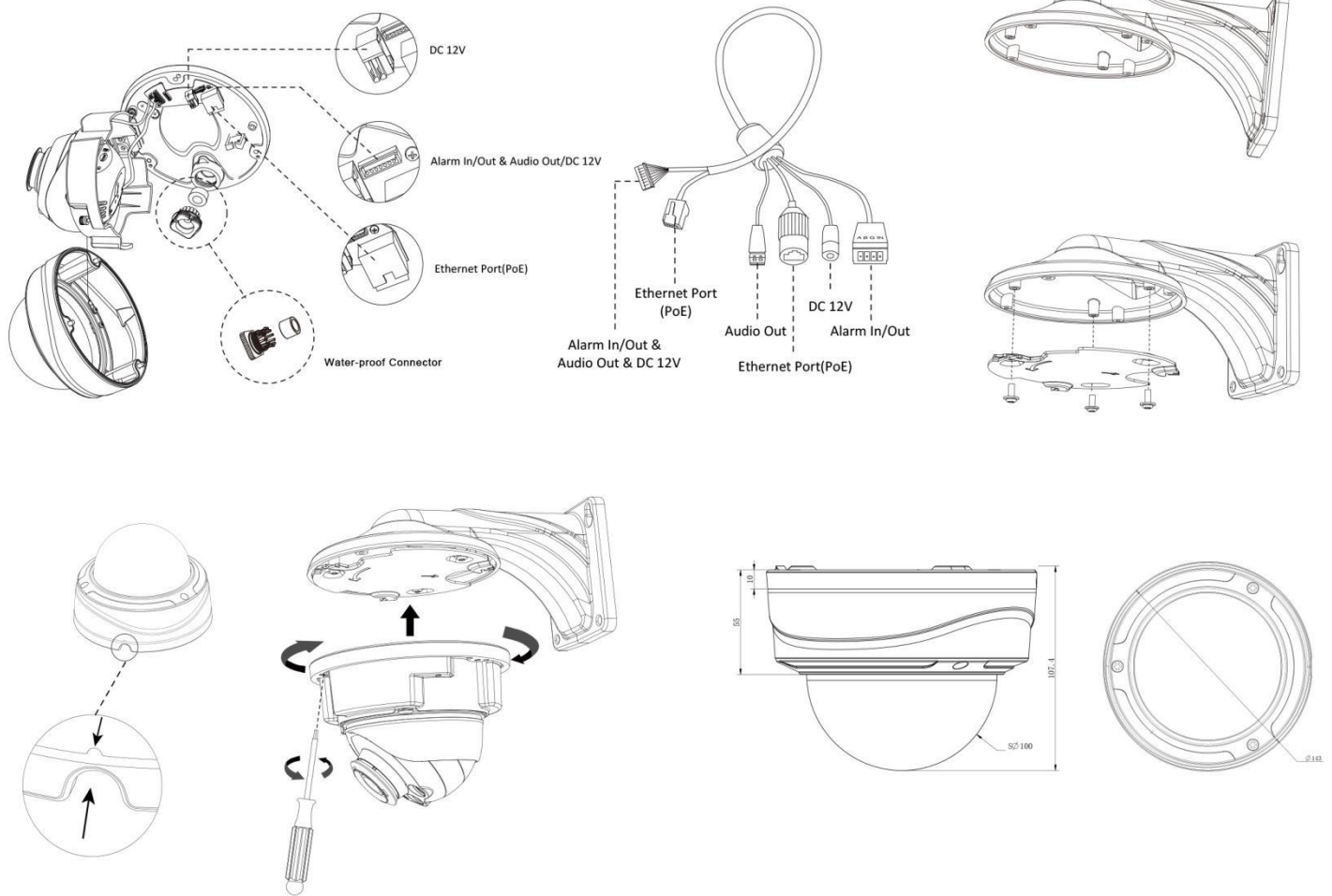


	Model	MS-C2872-(R)F(I)PB (2MP)	MS-C2972-(R)F(I)PB (2MP)	MS-C3772-F(I)PB (3MP)	MS-C4472-F(I)PB (4MP)	MS-C5372-F(I)PB (5MP)
Camera	Image Sensor	1/2" Progressive Scan CMOS	1/2.8" Progressive Scan CMOS		1/3" Progressive Scan CMOS	1/2.9" Progressive Scan CMOS
	Min. Illumination	Color: 0.001Lux@F1.2 B/W: 0Lux with IR on	Color: 0.002Lux@F1.2 B/W: 0Lux with IR on	Color: 0.005Lux@F1.2 B/W: 0Lux with IR on	Color: 0.008Lux@F1.2 B/W: 0Lux with IR on	Color: 0.006Lux@F1.2 B/W: 0Lux with IR on
	WDR	Super WDR up to 140dB		Super WDR up to 120dB		
	Lens	Motorized 3.6~10mm @F1.4 P-Iris(Optional)	Motorized 3.0~10.5mm/2.8~12mm/7~22mm @F1.4 P-Iris(Optional)			
	Mount	Φ14				
	Field of View	H96°~H42°/ D111°~D48°/ V55°~V23°	H93°~H33°/ D107°~D38°/ V52°~V18° (3.0~10.5mm)	H84°~H30°/ D105°~D37°/ V63°~V22° (3.0~10.5mm)	H85°~H30°/ D99°~D35°/ V48°~V17° (3.0~10.5mm)	H72°~H24°/ D90°~D31°/ V55°~V18° (3.0~10.5mm)
	Shutter Time	1/100000s~1/5s				
	IR Distance	Up to 50m(3.0~10.5mm)/ 80m(7~22mm)				
	Day&Night	ICR Filter Auto Switch				
Video	Max. Image Resolution	1920×1080		2048×1536	2592×1520	2560×1920
	Primary Stream	30fps@(1920×1080, 1280×960, 1280×720, 704×576) (60fps available for -R series)		30fps@(2048×1536, 1920×1080, 1280×960, 1280×720, 704×576)	20fps@(2592×1520), 30fps@(2304×1296, 1920×1080, 1280×960, 1280×720, 704×576)	20fps@(2560×1920, 2592×1520), 30fps@(2304×1296, 1920×1080, 1280×960, 1280×720, 704×576)
	Secondary Stream	30fps@(704×576, 640×480, 640×360, 352×288, 320×240, 320×192, 320×176 )				
	Tertiary Stream	30fps@(1920×1080, 1280×720, 704×576, 640×480, 640×360, 320×240, 320×192, 320×176 )				
	Video Compression	H.265 <sup>+</sup> /H.265(HEVC)/H.264 <sup>+</sup> /H.264/MJPEG				
	Video Bit Rate	16Kbps~16Mbps(CBR/VBR Adjustable)				
	Image Setting	Brightness/Contrast/Saturation/Sharpness				
Network	Ethernet	1*RJ45 10M/100M Ethernet Port				
	Network Storage Protocol	NAS(Support NFS, SMB/CIFS)				
	Protocol	IPv4/IPv6, TCP, UDP, RTP, RTSP, RTCP, HTTP, HTTPS, DNS, DDNS, DHCP, FTP, NTP, SMTP, SNMP, UPnP, SIP, PPPoE, VLAN, 802.1x				
Audio	Audio Compression	G.711/AAC				
	Audio I/O	Built-in Microphone and 1 Audio Output interface				
System	Alarm I/O	1/1				
	Storage	Support microSD/SDHC/SDXC Card Local Storage, up to 128G				
	Advanced Function	Motion Detection, Privacy Masking, Backlight Compensation, HLC, 3D-DNR, ROI, Anti-fog				
	SIP/VoIP Support	Yes, Voice & Video-over-IP				
	Event Trigger	Motion Detection, Network Disconnection, Audio Alarm, External Input, etc.				
	Event Action	FTP Upload/ SMTP Upload/ SD Card Record/ External Output/ SIP Phone				
	Video Analysis (Optional)	Region Entrance, Region Exiting, Advanced Motion Detection, Tamper Detection, Line Crossing, Loitering, Human Detection, People Counting				
System Compatibility	ONVIF Profile S					
General	Working Temperature	-30℃~60℃				
	Working Humidity	0~90%(Non-condensing)				
	Power Supply	PoE/ DC 12V±10%				
	Power Consumption	8W MAX 12W MAX (With IR on)				
	Weather Proof	Up to IP67-rated for Weather-resistant Performance				
	Housing	Vandal-proof IK10-rated Metal Housing				
	Weight	1100g				
	Dimensions	Φ143mmX107.4mm				
Warranty	3/5 Years					

# H.265 Motorized Pro Dome Network Camera



## Structure Diagrams



Units: mm

## Accessories Support

A01 Pole mount with stainless steel straps

Weight: 720g  
Dimensions: 170\*51.5\*152.6mm



A01-N Pole mount with stainless steel straps

Weight: 730g  
Dimensions: 170\*51.5\*152.6mm



A02 Corner bracket

Weight: 540g  
Dimensions: 170\*23.2\*205.3mm



A03 Corner bracket

Weight: 900g  
Dimensions: 170\*152.6\*76.3mm



A72 Wall mount

Weight: 350g  
Dimensions: 106\*140\*214mm



AC-72 Smoked dome cover

For concealing where a camera is pointed



## Naming Convention



Milesight Technology Co.,Ltd. | [www.milesight.com](http://www.milesight.com)

Contact Us: [sales@milesight.com](mailto:sales@milesight.com) [support@milesight.com](mailto:support@milesight.com)



Add: 7509 N.W. 36th Street, Miami, Florida 33166, USA  
Tel: +1-800-561-0485

Add: 9F/901, Star Valley B/D Digital-ro 9gil 99, Geumcheon-gu, Seoul, Korea  
Tel: +82-2-839-3335

Add: No.23 Wanghai Road, 2nd Software Park, Xiamen, China  
Tel: +86-592-5922772