

2/4/5 Megapixel 12x H.265 Mini (PoE) PTZ Bullet Network Camera



IP66

AF Lens

MS-C2961-E(P)B/MS-C4461-E(P)B/
MS-C5361-E(P)B

DATASHEET

KEY FEATURES

- ▶ **Smart Stream** (Bandwidth, storage and bit rate save with Smart Stream ON, eg, H.265+ save 70%~80% bandwidth of H.264.)
- ▶ **Smart IR II** (Combining the High Beam and Low Beam to adjust IR intensity to fit different lighting conditions.)
- ▶ **140dB Super WDR** (Excellent performance even when the ratio of the luminosity of brightest and darkest is up to 140dB.)
- ▶ **Smart PTZ Motion Detection** (Pan and tilt to the position of motion detected area automatically and zoom in synchronously.)
- ▶ **255 Preset Positions** (The user can easily control the lens position via mouse to monitor interested area and set up to 255 preset positions for patrolling.)
- ▶ **Keyboard Control** (Shortcut keys for PTZ control via Milesight Keyboard.)
- ▶ **Breathable Screw-in Vent** (High weather-proof and air permeable performance to reduce fogging, condensation and eliminate moisture.)

Video Content Analysis

Milesight VCA with 8 detection modes provides advanced, accurate smart video analysis for Milesight network cameras, enabling the comprehensive surveillance function and quicker response to different monitoring scenes.

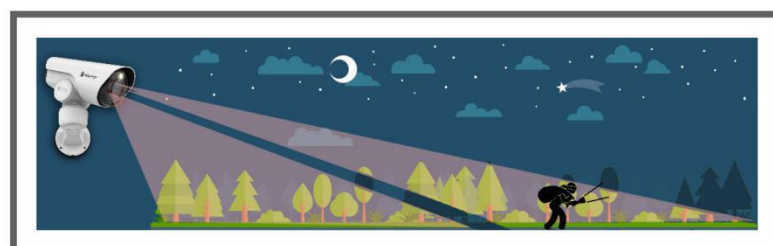
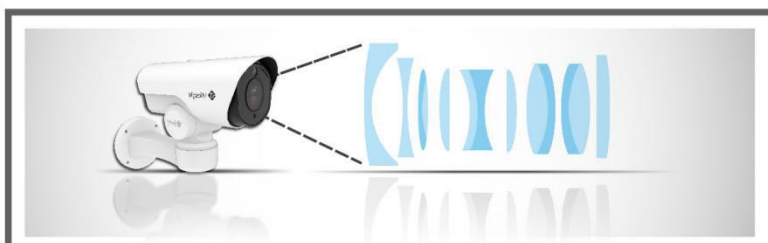


0.002Lux Ultra Low-light

The starlight camera is able to deliver high detailed color images even in low light environment reaching 0.002Lux(Color) or 0Lux(B/W), and near infrared light environments without any supplementary lighting.

12x Optical Zoom

The 12x optical zoom can zoom up to distant subjects while still maintaining the clarity, delivering high quality video over the entire zoom range.



IR LEDs & White LED

Enable 100 meters distinct images at night with IR LEDs as well as express alarm and deliver colorful surveillance with the White LED.

12x H.265 Mini (PoE) PTZ Bullet Network Camera

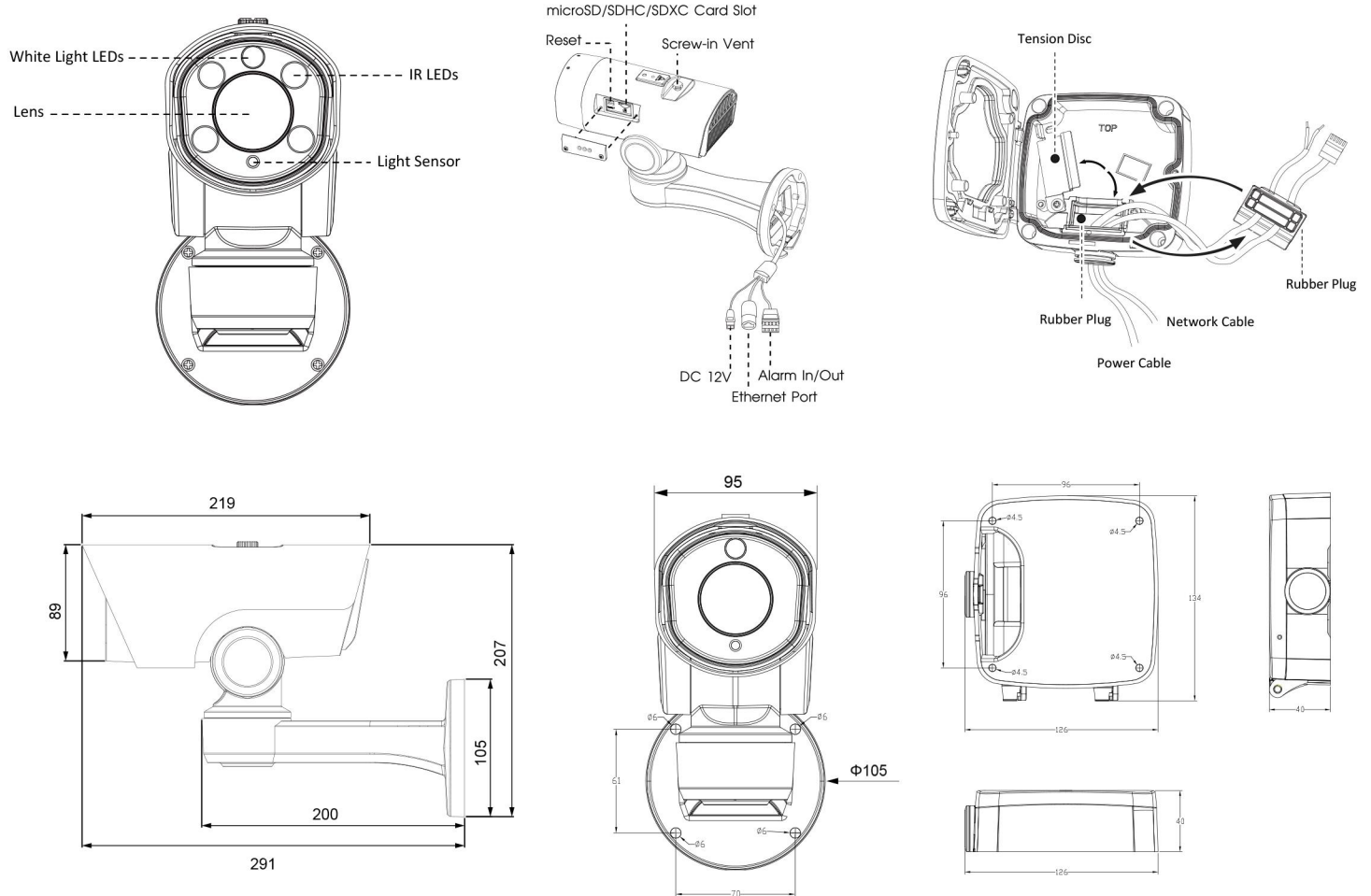


| Camera | Model | MS-C2961-E(P)B(2MP) | MS-C4461-E(P)B(4MP) | MS-C5361-E(P)B(5MP) |
|-------------------|---------------------------|--|---|--|
| | Image Sensor | 1/2.8" Progressive Scan CMOS | 1/3" Progressive Scan CMOS | 1/2.9" Progressive Scan CMOS |
| | Min. Illumination | Color: 0.002Lux@F1.2 B/W: 0Lux with IR on | Color: 0.008Lux@F1.2 B/W: 0Lux with IR on | Color: 0.006Lux@F1.2 B/W: 0Lux with IR on |
| | WDR | Super WDR up to 140dB | Super WDR up to 120dB | |
| | Shutter Time | 1/100000s~1/5s | | |
| | IR Distance | Up to 100m | | |
| | Day&Night | ICR Filter Auto Switch | | |
| Lens | Focal Length | 5.3~64mm, 12x Optical Zoom | | |
| | Zoom Speed | 3.1s | | |
| | Field of View | H61°~H5°/D69°~D5°/ V36°~V2° | H57°~H4°/D65°~D5°/ V35°~V2° | H49°~H3°/D59°~D4°/ V38°~V2° |
| | Minimum Working Distance | 1000~1500mm (Wide-Tele) | | |
| | Aperture | F1.6~F2.8 | | |
| PTZ | Pan Range | 360°endless | | |
| | Pan Speed | Pan Manual Speed: 0.2°~60°/s, Pan Preset Speed 100°/s | | |
| | Tilt Range | -45°~30° | | |
| | Tilt Speed | Tilt Manual Speed: 0.2°~30°/s, Tilt Preset Speed 60°/s | | |
| | Proportional Zoom | Support | | |
| | Preset Quantity | 255 | | |
| | Patrol | 8 Patrols, up to 48 presets each patrol | | |
| | Pattern | 4 Patterns | | |
| | Power Loss Recovery | Support | | |
| | PTZ Position Display | ON/OFF | | |
| | 3D Positioning | Support | | |
| | Video | Max. Image Resolution | 1920×1080 | 2592×1520 |
| Primary Stream | | 30fps@(1920×1080, 1280×960, 1280×720, 704x576) | 20fps@(2592×1520), 30fps@(2304x1296, 1920×1080, 1280×960, 1280×720, 704x576) | 20fps@(2560×1920, 2592×1520), 30fps@(2304x1296, 1920×1080, 1280×960, 1280×720, 704x576) |
| Secondary Stream | | 30fps@(704x576, 640×480, 640×360, 352x288, 320x240, 320x192, 320x176) | | |
| Tertiary Stream | | 30fps@(1920×1080, 1280×720, 704×576, 640×480, 640×360, 320×240, 320x192, 320x176) | | |
| Video Compression | | H.265 ⁺ /H.265(HEVC)/H.264 ⁺ /H.264/MJPEG | | |
| Video Bit Rate | | 16Kbps~16Mbps(CBR/VBR Adjustable) | | |
| Image Setting | | Brightness/Contrast/Saturation/Sharpness | | |
| Network | Ethernet | 1*RJ45 10M/100M Ethernet Port | | |
| | Network Storage | NAS(Support NFS, SMB/CIFS) | | |
| | Protocol | IPv4/IPv6, TCP, UDP, RTP, RTSP, RTCP, HTTP, HTTPS, DNS, DDNS, DHCP, FTP, NTP, SMTP, SNMP, UPnP, SIP, PPPoE, VLAN, 802.1x | | |
| System | Alarm I/O | 1/1 | | |
| | Storage | Support microSD/SDHC/SDXC Card Local Storage, up to 128G | | |
| | Advanced Function | Motion Detection, Privacy Masking, Backlight Compensation, HLC, 3D-DNR, ROI, Anti-fog | | |
| | SIP/VoIP Support | Yes, Voice & Video-over-IP | | |
| | Event Trigger | Motion Detection, Network Disconnection, External Input, etc. | | |
| | Event Action | FTP Upload/ SMTP Upload/ SD Card Record/ External Output/ SIP Phone/ White LED/ PTZ Motion | | |
| | Video Analysis (Optional) | Region Entrance, Region Exiting, Advanced Motion Detection, Tamper Detection, Line Crossing, Loitering, Human Detection, People Counting | | |
| | System Compatibility | ONVIF Profile S | | |
| General | Working Temperature | -30℃~60℃ | | |
| | Working Humidity | 0~90%(Non-condensing) | | |
| | Power Supply | DC 12V, 2A / PoE (802.3at)(Optional) | | |
| | Power Consumption | 10.5W MAX 20W MAX (With IR on) | | |
| | Weather Proof | Up to IP66-rated for Weather-resistant Performance | | |
| | Weight | 2Kg | | |
| | Dimensions | 291mm×207mm×95mm | | |
| | Warranty | 2 Years | | |

12x H.265 Mini (PoE) PTZ Bullet Network Camera



Structure Diagrams



Units: mm

Accessories Support

A01-N Pole mount with stainless steel straps
Weight: 730g
Dimensions: 170*51.5*152.6



A62 Junction box
Weight: 510g
Dimensions: 134*127*40mm



Naming Convention

MS-C 2 9 61- E P B

2 - 2MP (4 - 4MP / 5 - 5MP) Sensor Mini PTZ Bullet Enterprise Edition PoE H.265

Milesight Technology Co.,Ltd. | www.milesight.com

Contact Us: sales@milesight.com support@milesight.com

Add: 7509 N.W. 36th Street, Miami,
Florida 33166, USA
Tel: +1-800-561-0485

Add: 9F/901, Star Valley B/D Digital-ro
9gil 99, Geumcheon-gu, Seoul, Korea
Tel: +82-2-839-3335

Add: No.23 Wanghai Road,
2nd Software Park, Xiamen, China
Tel: +86-592-5922772

