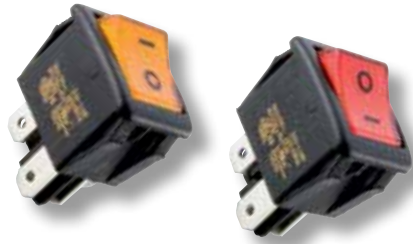


## INTERRUTTORI

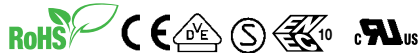
Switches | Interrupteurs



### INTERRUTTORI BIPOLARI

Double pole switches | Interrupteurs bipolaires

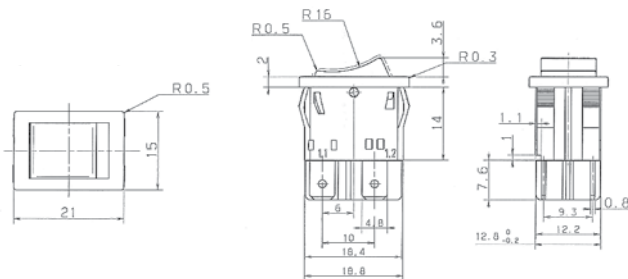
<b>Tensione</b> 250 Vac	<b>Voltage</b> 250 Vac	<b>Tension</b> 250 Vac
<b>Corrente</b> 10 A resistivi	<b>Current</b> 10 A resistive	<b>Courant</b> 10 A résistifs
<b>Contatti</b> Ottone argentato faston 4,8 mm	<b>Contacts</b> Silver-plated brass faston 4,8 mm	<b>Contacts</b> Laiton argenté 4,8 mm faston
<b>Corpo</b> Policarbonato nero	<b>Body</b> Black polycarbonate	<b>Corps</b> Polycarbonate noir
<b>Cicli di lavoro</b> 300.000	<b>Operating cycles</b> 300.000	<b>Durée de vie</b> 300.000 cycles
<b>Temperatura</b> 125°C	<b>Temperature</b> 125°C	<b>Température</b> 125°C



Codice Code Code	Circuito Circuit Circuit	Colore bascula Rocker colour Couleur bascule
I3910	on - off	■
I3913	on - off	■ neon
I3915	on - off	■ neon

**Accessorio | Accessory | Accessoire**  
PG3901 calotta di protezione IP55/PG3901 protection cover IP55/PG3901 capot de protection IP55

### Dimensioni | Dimensions | Dimensions

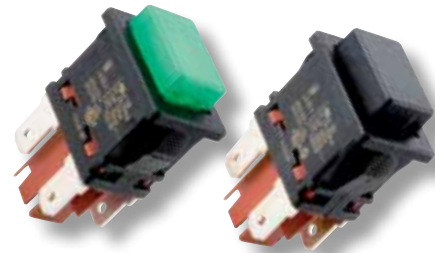


grado di protezione 40 IP  
sealing IP 40  
indice de protection IP 40

cava pannello 19x13 mm  
panel cut-out 19x13 mm  
découpe du panneau 19x13 mm

100 pz  
100 pcs  
100 pces

pronta  
in stock  
en stock



### INTERRUTTORI / PULSANTI BIPOLARI

Double pole switches/Momentary switches | Interrupteurs/poussoirs bipolaires

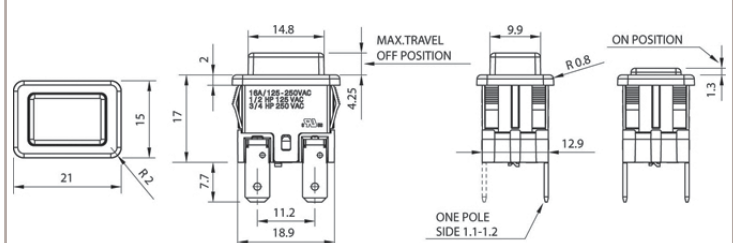
<b>Tensione</b> 250 Vac	<b>Voltage</b> 250 Vac	<b>Tension</b> 250 Vac
<b>Corrente</b> 16 A resistivi/6 A induttivi	<b>Current</b> 16 A resistive/6 A inductive	<b>Courant</b> 16 A résistifs/6 A inductifs
<b>Contatti</b> Ottone argentato faston 4,8 mm	<b>Contacts</b> Silver-plated brass 4,8 mm faston	<b>Contacts</b> Laiton argenté faston 4,8 mm
<b>Corpo</b> Policarbonato nero	<b>Body</b> Black polycarbonate	<b>Corps</b> Polycarbonate noir
<b>Cicli di lavoro</b> 10.000	<b>Operating cycles</b> 10.000	<b>Durée de vie</b> 10.000 cycles
<b>Temperatura</b> 125°C	<b>Temperature</b> 125°C	<b>Température</b> 125°C



Codice Code Code	Circuito Circuit Circuit	Colore bascula Rocker colour Couleur bascule
I3950	on - off	■
I3953	on - of	■ neon
I3955	on - off	■ neon
I3952	on - off	■ neon
I3921	on - mom	■

**Accessorio | Accessory | Accessoire**  
PG3900 calotta di protezione IP64/protection cover IP64/capot de protection IP64

### Dimensioni | Dimensions | Dimensions



grado di protezione 40 IP  
sealing IP 40  
indice de protection IP 40

cava pannello 19x13 mm  
panel cut-out 19x13 mm  
découpe du panneau 19x13 mm

100 pz  
100 pcs  
100 pces

pronta  
in stock  
en stock