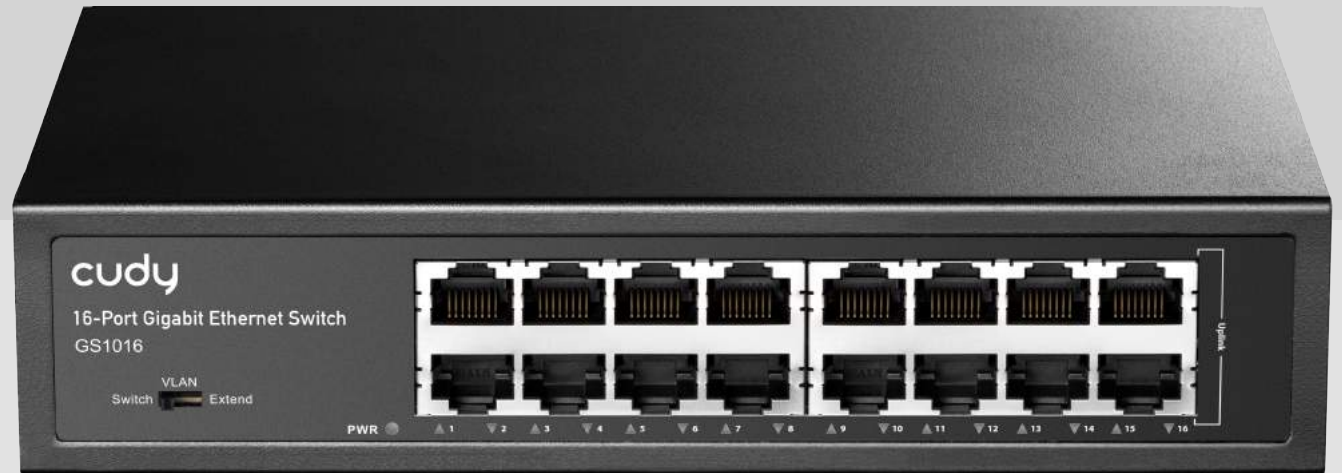




Model

GS1016

16-Port Gigabit Ethernet Switch



1. Features

1. Conforms to IEEE802.3, IEEE 802.3u, IEEE 802.3ab.
2. Provides 16 10/100/1000Base-T ports.
3. High back-plane bandwidth 32Gbps.
4. IEEE802.3x Flow control.
5. The switch supports one-key function conversion, currently supports three modes, normal mode, VLAN mode, extend 250m mode:

Normal: Normal mode, no special function.

VLAN : 1-14 port will not communicate with each other only communicate with uplink port 15-16. It will control the Net storm, protect the information security.

Extend 250m: 1-14 port can transmit 250 meters, when using Cat5e/6 network cable or better network cable, port 15-16 has no special function.

2. Product Specifications

Item		Description	
Power	Power Supply	Built-in power supply	
	Voltage Range	AC100~ 240V	
	Consumption	<15W	
Ethernet	Speed	1-24 Port: 10/100/1000Mbps	
	Transmission Distance	100 Meters (328ft)	
Network Switch	Ethernet Standard	IEEE 802.3/802.3u/802.3ab	
	Switching capacity	32G	
	Transfer Rate	14,880 pps for 10Mbps 148,800 pps for 100Mbps 148,8000 pps for 100Mbps	
	MAC Address	8K MAC address table	
LINK/ACT	On	Green	The port is connecting
	Blinks	-	The port is receiving or transmitting data
	Off	-	The port is not linked successfully with the device
Working Environment	Working Temperature	0℃ ~ 40℃	
	Storage Temperature	-40℃ ~ 70℃	
	Humidity Non condensing	0~85%	
Mechanical	Dimension L* W * H	200 x 118 x 44mm	
	Color	Black	